

MLS Area HS

Residential Statistics



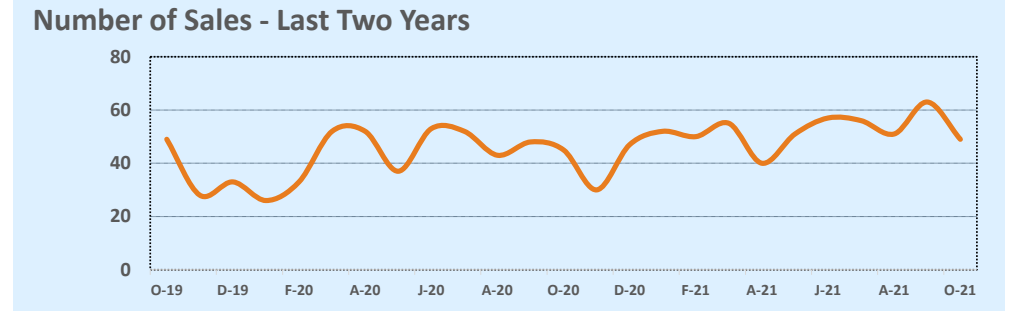
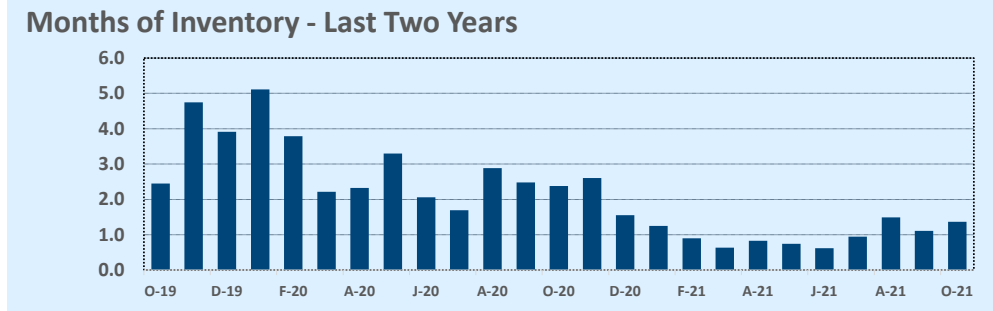
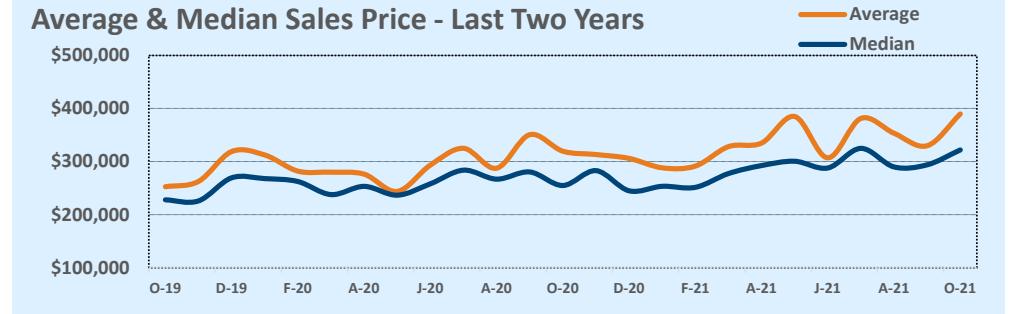
October 2021

Listings	This Month			Year-to-Date		
	Oct 2021	Oct 2020	Change	2021	2020	Change
Single Family Sales	48	40	+20.0%	478	413	+15.7%
Condo/TH Sales	1	5	-80.0%	46	28	+64.3%
Total Sales	49	45	+8.9%	524	441	+18.8%
New Homes Only	11	3	+266.7%	76	63	+20.6%
Resale Only	38	42	-9.5%	448	378	+18.5%
Sales Volume	\$19,100,946	\$14,383,263	+32.8%	\$177,434,190	\$131,437,780	+35.0%
New Listings	50	51	-2.0%	660	519	+27.2%
Pending	--	--	--	--	--	--
Withdrawn	2	2	--	5	22	-77.3%
Expired	2	2	--	5	22	-77.3%
Months of Inventory	1.4	2.4	-42.5%	N/A	N/A	--

Price Range	This Month			Year-to-Date		
	New	Sales	DOM	New	Sales	DOM
\$149,999 or under	1	2	6	15	16	37
\$150,000- \$199,999	--	3	38	46	40	15
\$200,000- \$249,999	2	3	13	86	96	27
\$250,000- \$299,999	10	11	7	177	137	26
\$300,000- \$349,999	18	11	25	105	81	26
\$350,000- \$399,999	5	4	60	61	39	37
\$400,000- \$449,999	3	6	44	45	43	37
\$450,000- \$499,999	2	--	--	25	15	37
\$500,000- \$549,999	--	1	44	19	11	33
\$550,000- \$599,999	2	--	--	14	9	92
\$600,000- \$699,999	1	3	13	22	15	72
\$700,000- \$799,999	3	3	51	20	13	26
\$800,000- \$899,999	--	--	--	9	2	12
\$900,000- \$999,999	--	1	11	3	2	10
\$1M - \$1.99M	2	1	30	10	3	13
\$2M - \$2.99M	1	--	--	3	2	18
\$3M+	--	--	--	--	--	--
Totals	50	49	26	660	524	30

Average	This Month			Year-to-Date		
	Oct 2021	Oct 2020	Change	2021	2020	Change
List Price	\$395,251	\$327,563	+20.7%	\$334,240	\$305,803	+9.3%
List Price/SqFt	\$209	\$162	+29.3%	\$183	\$158	+15.8%
Sold Price	\$389,815	\$319,628	+22.0%	\$338,615	\$298,045	+13.6%
Sold Price/SqFt	\$208	\$160	+30.2%	\$186	\$155	+20.3%
Sold Price / Orig LP	100.2%	99.8%	+0.4%	102.1%	98.2%	+4.0%
Days on Market	26	51	-48.3%	30	71	-57.7%

Median	This Month			Year-to-Date		
	Oct 2021	Oct 2020	Change	2021	2020	Change
List Price	\$315,000	\$259,900	+21.2%	\$279,988	\$261,469	+7.1%
List Price/SqFt	\$204	\$161	+26.9%	\$173	\$152	+13.8%
Sold Price	\$322,000	\$255,000	+26.3%	\$290,000	\$258,829	+12.0%
Sold Price/SqFt	\$202	\$161	+25.3%	\$178	\$149	+19.4%
Sold Price / Orig LP	100.0%	99.7%	+0.3%	100.0%	98.9%	+1.2%
Days on Market	12	19	-36.8%	9	35	-75.7%



Based on information from the Austin Board of REALTORS® (alternatively, from ACTRIS). Neither the Board nor ACTRIS guarantees or is in any way responsible for its accuracy. The Austin Board of REALTORS®, ACTRIS and their affiliates provide the MLS and all content therein "AS IS" and without any warranty, express or implied. Data maintained by the Board or ACTRIS may not reflect all real estate activity in the market.